

Let's meet in Wrocław!

1 day

If you have **ONE DAY** to explore Wrocław:

Morning

These Wrocław historical objects are your must-see:

- Market square with the city hall, cloth hall and a fountain, all surrounded by burgher houses,
- University of Wrocław with its Leopoldine Hall, Oratorium Marianum and Mathematical Tower (viewing point),
- Ostrów Tumski (Cathedral Island) with the cathedra (viewing point) and the Panorama of the Battle of Raclawice.

Afternoon

Take a tram or boat to reach the Zoological Garden; visit the Centennial Hall with its Visitor Centre and Four Domes Pavilion, take your time to relax in the Szczytnicki Park with the Japanese Garden.

Evening

Choose a concert in the National Forum of Music, or opera, or performance in any of numerous theatres. If you want to get hip to city's nightlife, visit any of the clubs located downtown, or Św. Antoniego Street.

2 days

If you have **TWO DAYS** to explore Wrocław. Besides the one-day agenda above, you definitely need to:

Morning

Visit the "1000 years of Wrocław" exhibition in the Royal Palace. Walk along the Staromiejska Promenade, contemplating the representative buildings along the Wolności Square; take a peek in the Staromiejski Garden and the Four Denominations District.

Afternoon

Starting from the Piotr Włostowic Boulevard, take a tram or boat to reach the Zwierzyniecki Bridge. It is only one step away from the Wrocław ZOO. Visit the Zoological Garden, not forgetting Africarium.

Evening

After dark, watch the Multimedia Fountain show or hear a concert in one of the clubs located at the Wrocław Market Square.

3 days

If you have **THREE DAYS** to explore Wrocław. Apart from the agenda for the first and second day, you must:

Morning

Choose from many Wrocław museums: Museum of Architecture, National Museum, Wrocław City Museum. If you wish to see the manuscript of Master Thaddeus, guide your steps towards the innovative Pan Tadeusz Museum at the Market Square.

Want to get a break surrounded by green? Visit the Botanical Garden with the oldest and the largest Natural Science Museum in the country or take a walk along Nadodrze and Ołbin contemplating the tenement houses dating back to the 19th and 20th century, numerous ornated with colourful murals. Take a rest in one of many atmospheric eateries and cafés with delicious coffee.

Afternoon

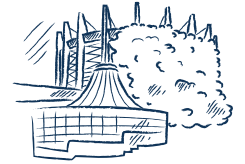
Visit the Sky Tower viewing point (lift) or any other viewing terrace.

Evening

Go back to Ostrów Tumski to see the lamplighter switching on the gas lanterns, or relax in the Wrocław Aquapark.



City Hall



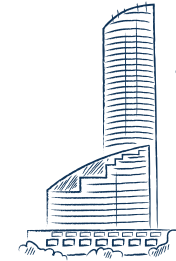
Panorama of the Battle of Raclawice



Centennial Hall



Japanese Garden



Sky Tower



Zoological Garden and Africarium



The District of Four Denominations



National Forum of Music



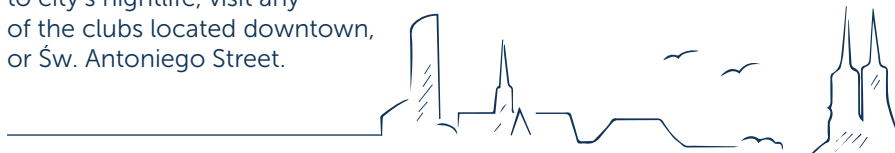
Opera House

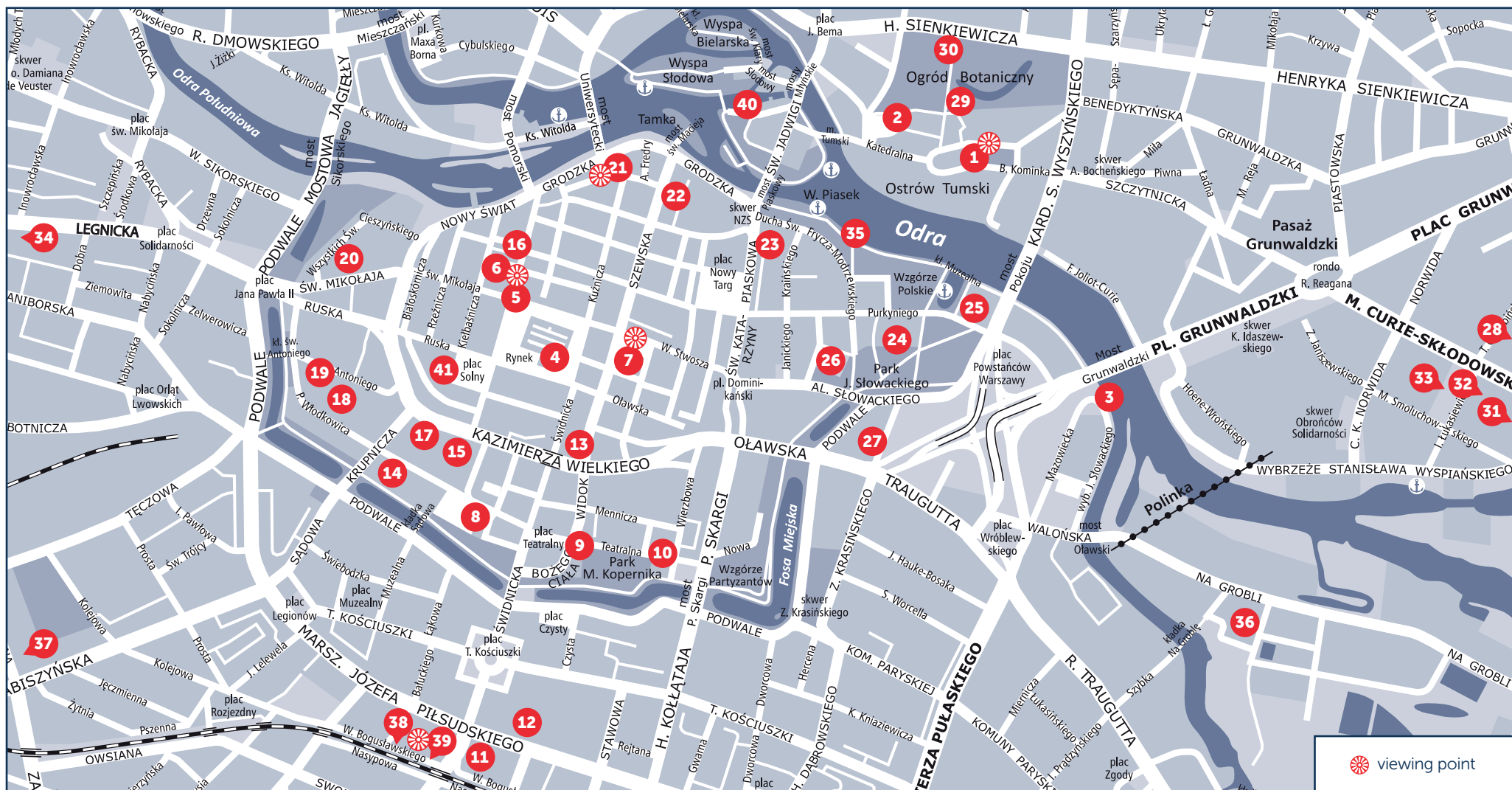
Exploring Wrocław WITH CHILDREN

If you explore Wrocław with children, don't forget to visit:

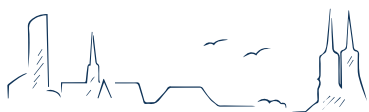
- **History Centre Zajeżdźnia** to familiarise your children with the latest history of Wrocław depicted in attractive way,
- **Hydropolis**, an innovative centre of knowledge about water and all that is connected with water with a dedicated children zone,
- **Kolejkowo** – the miniature world of railways and trains pictured on the largest model in Poland,
- **Museum of Illusions**, in which you will learn about the mysteries of science and magic, and take an adventure in the upside down world.

When exploring the city, scout around to spot the tiniest citizens – the Wrocław dwarfs. There are hundreds of them in our city!





- | | | | | |
|--|---|---|---|--------------------------|
| 1. St. John the Baptist Cathedral | 10. Old Town Garden | 19. St. Anthony Church | 27. Museum of Post and Telecommunications | 36. Hydropolis |
| 2. Holy Cross Church | 11. Capitol Musical Theatre | 20. Orthodox Cathedral of the Nativity of the Most Holy Mother of God | 28. Japanese Garden | 37. Depot History Centre |
| 3. Odra Center | 12. The Lower Silesia Film Centre | 21. University of Wrocław | 29. Botanical Garden | 38. Kolejkowo |
| 4. City Hall - Museum of Bourgeois Art | 13. Culture Zone Wrocław | 22. Ossoliński National Institute | 30. Museum of Natural History | 39. Sky Tower |
| 5. Hansel and Gretel Townhouses | 14. National Forum of Music | 23. Market Hall | 31. Centennial Hall with Visitor Centre | 40. Nadodrże |
| 6. St. Elisabeth's Church | 15. Royal Palace | 24. Ractawice Panorama | 32. Multimedia Fountain | 41. Olbin |
| 7. Cathedral of St. Mary Magdalene | 16. Jatki | 25. National Museum | 33. ZOO with Africarium | 42. Museum of Illusions |
| 8. Opera | 17. Evangelical Church of Divine Providence | 26. Museum of Architecture | 34. Wrocław Contemporary Museum | 43. Movie Gate |
| 9. Wrocław Puppet Theatre | 18. White Stork Synagogue | | 35. X. Dunikowski Boulevard | |



Visit Wrocław



Wrocław [Wroclove]

visitWrocław.eu

Wrocław

the meeting place